

TODAY'S
MASTERS



DRAWING US TO SEE

CASEY BAUGH (b. 1984), *The Thinker*, 2021, charcoal on paper, 16 x 18 in., Vanessa Rothe Fine Art (Laguna Beach, California)

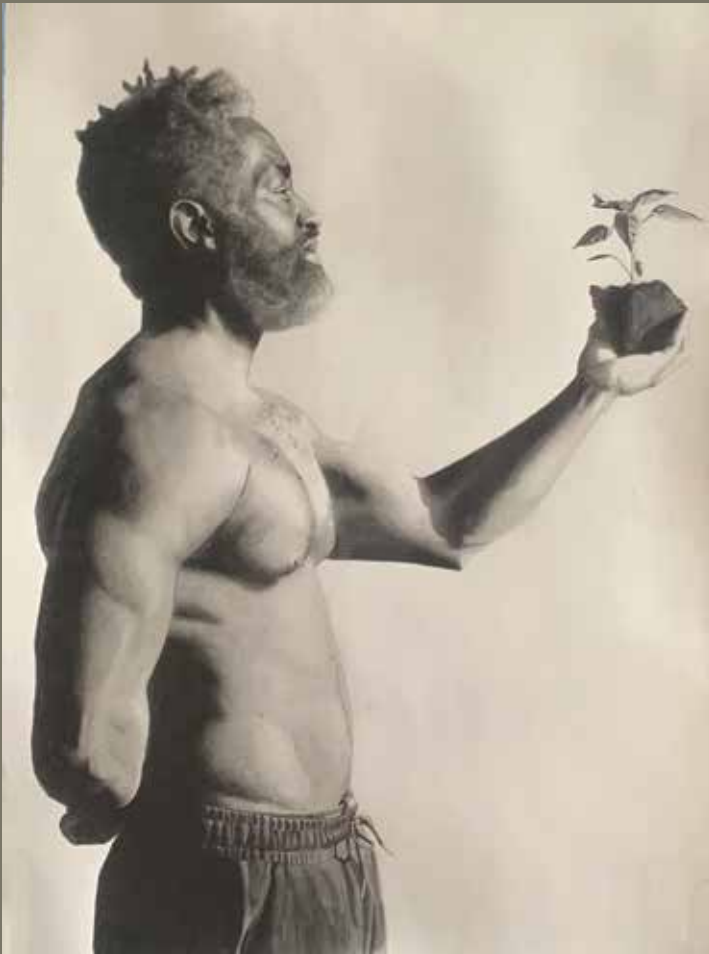
Every young child draws, without prompting or hesitation, so how sad is it that draftsmanship ebbs away from most of us during adolescence? In adulthood, drawing can help us not only to dream, experiment, and plan, but also to see our world more clearly and deeply, to take something complex and break it apart into something manageable. When we slow down to study something long enough to draw it, we begin to understand it, and ultimately to control its impact on us.

These are all powerful, self-affirming reasons to draw, and so we salute the artists represented here for doing so in such fresh and memorable ways. They have created their works primarily with graphite (pencil), and also with charcoal, sanguine, ink, gouache, acrylic, pas-

tel, and even gold leaf. Drawing from life, imagination, or both, these gifted artists demonstrate their mastery of such concepts as perspective, proportion, value, light and shade, line, contour, gesture, and structure — prioritizing them to greater or lesser degrees.

More important, they remind us that compelling art-making does not rely upon expensive, complicated materials — or even necessarily upon color — to connect with viewers. Please enjoy the view, and then try drawing next time you have a chance to sit for a while, like on a train or in a doctor's waiting room. You will be intrigued by what happens next. ●

MAX GILLIES is a contributing writer to *Fine Art Connoisseur*.



(CLOCKWISE FROM TOP LEFT) **ALEKSANDER BETKO** (b. 1976), *Book of Ecclesiastes*, 2022, graphite on paper, 40 x 30 in., 33 Contemporary Gallery (Chicago) ■ **ERNEST E. BURDEN** (b. 1963), *An Urn for My Father*, 2022, graphite on paper, 12 x 18 in., available through the artist ■ **ROX CORBETT** (b. 1956), *Buick and the Beast*, 2015, charcoal on paper, 17 1/2 x 25 in., private collection ■ **LISA RICKARD** (b. 1962), *Allegorical Figure*, 2022, graphite on paper, 20 x 10 in., 33 Contemporary Gallery (Chicago) ■ **THOMAS BUTLER** (b. 1980), *Melina*, 2021, graphite on paper, 18 x 14 in., available through the artist



(CLOCKWISE FROM TOP LEFT) **STEPHANIE CAMPOS** (b. 1956), *Sioux*, 2022, charcoal on paper, 25 x 19 in., Settlers West Galleries, Tucson ■ **EMILY COPELAND** (b. 1992), *Vintage Movie Camera*, 2022, charcoal on paper, 24 x 34 1/2 in., RJD Gallery (Romeo, Michigan) ■ **MICHELLE DUNAWAY** (b. 1972), *Native Dancer*, 2016, charcoal on watercolor paper, 22 x 16 in., private collection ■ **MARY C. CARROLL** (b. 1979), *Talisman*, 2022, graphite and acrylic on paper, 16 x 12 in., offered by Abend Gallery (Denver) at this January's *LA Art Show*



(ABOVE) **SARA GALLAGHER** (b. 1990), *A Night Out*, 2022, graphite and pan pastel on paper, 20 x 27 1/2 in., private collection ■ (LEFT) **CARLOS FENTANES** (b. 1968), *Self Isolation or The Unsung Story of How Dreams Unconsciously Interfered with My Daily Life*, 2022, sandpaper charcoal on paper, 22 x 30 in., available through PoetsArtists



(CLOCKWISE FROM ABOVE)
MICHAEL DUMAS (b. 1950),
Winter Pines – Algonquin Park, 2005, graphite on paper,
30 1/4 x 22 1/2 in., private collection ■ **NAOMI MARINO**
(b. 1977), *Saul*, 2022, charcoal
and white chalk on paper,
22 x 16 in., available through the artist ■ **MARY WHYTE** (b. 1953),
Little One, 2021, graphite on
paper, 16 1/2 x 12 1/4 in., available
through Mary Whyte Studio
(Charleston) ■ **NADIA FERRANTE**
(b. 1976), *Melancholia*, 2021, white
pastel, sanguine, and charcoal
on paper, 11 x 8 1/5 in., available
through the artist





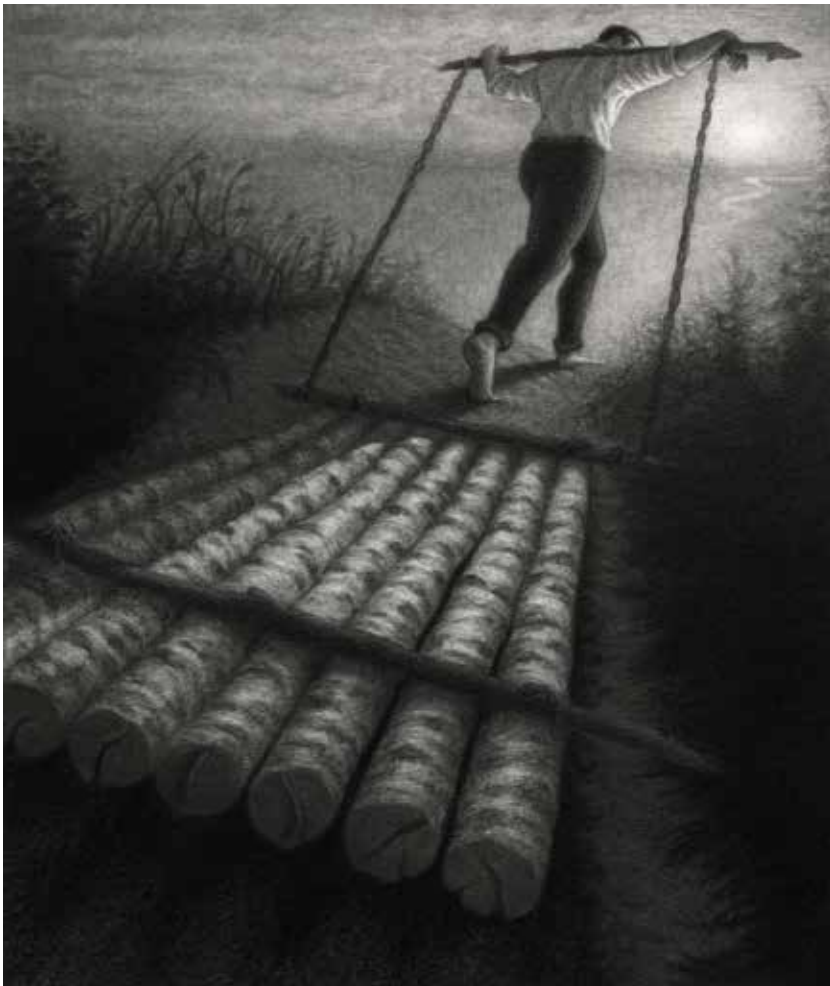
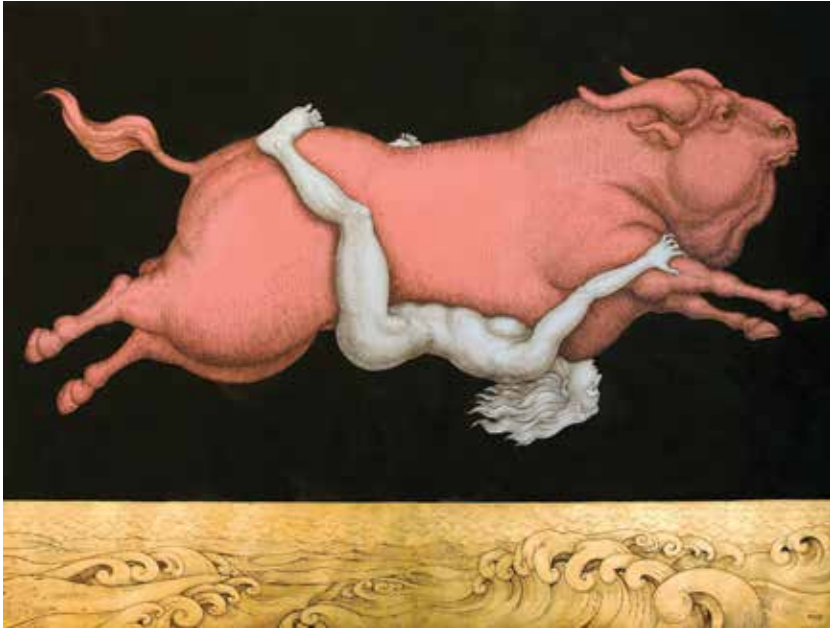
(TOP) **NICOLE ALGER** (b. 1966), *Beltane*, 2022, charcoal and sanguine on paper, 12 x 16 in., available through the artist ■ (ABOVE) **MARIANNA FOSTER** (b. 1982), *Ocean Lace*, 2021, charcoal and colored pencil on cardboard, 20 x 32 in., available through the artist ■ (LEFT) **SOOKYI LEE** (b. 1975), *Bridget No. 1*, 2017, charcoal on paper, 24 x 18 in., private collection



DANIEL MAIDMAN (b. 1975), *Laura's Flowers*, 2022,
pencil on paper, 15 x 11 in., available through the artist



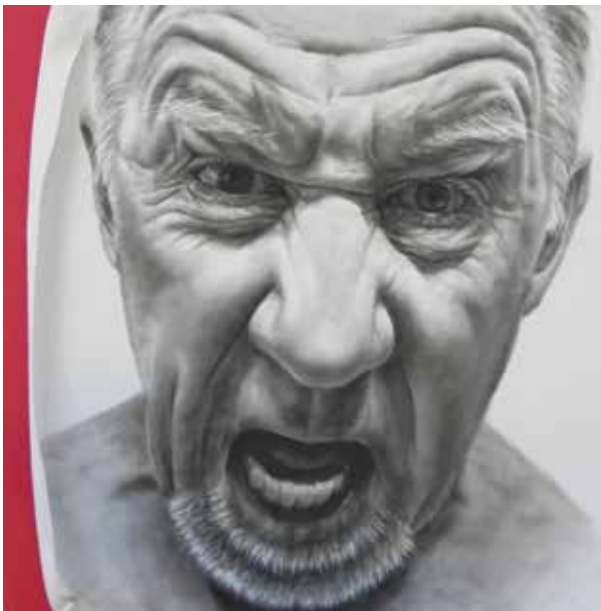
(CLOCKWISE FROM TOP LEFT) **GEOFFREY LAURENCE** (b. 1949), *Addy in July*, 2022, pastel and charcoal on paper, 23 x 33 in., available through the artist ■ **ANNIE A. MURPHY-ROBINSON** (b. 1967), *Through the Looking Glass*, 2022, sanded charcoal on paper, 45 x 27 in., private collection ■ **RYAN WURMSER** (b. 1973), *Backview of Magda*, 2010, graphite on paper, 18 x 24 in., collection of the artist ■ **CAROL PEEBLES** (b. 1967), *Home*, 2022, pastel on paper, 22 x 26 in., private collection ■ **ROSANNA GADDONI** (b. 1972), *The Infinite Moment*, 2021, charcoal and graphite on paper, 12 1/5 x 12 1/5 in., private collection



(CLOCKWISE FROM TOP LEFT) **MICHAEL BERGT** (b. 1956), *Europa*, 2022, ink, 24-karat gold leaf, and gouache on paper, 30 x 40 in., Nüart Gallery (Santa Fe) ■ **SÍLVIA SÃO PAULO** (b. 1990), *Sleeping Awake*, 2022, graphite on paper, 22 2/5 x 19 7/10 in., available through artsy.net ■ **OLIVER SIN** (b. 1973), *Dad*, 2019, vine charcoal on paper, 17 x 14 in., private collection ■ **MEGAN ELIZABETH READ** (b. 1982), *Fold*, 2022, charcoal and graphite on paper, 6 x 6 in., private collection ■ **ERIN RUFFINO** (b. 1997), *Act II: Prayer Like a War Cry*, 2021, graphite on paper, 9 x 8 1/2 in., available through the artist



(CLOCKWISE FROM TOP LEFT) **JENNA RINGUETTE** (b. 2000), *Big Pat*, 2021, charcoal on paper, 20 x 16 in., available through the artist ■ **JOHN CAGGIANO** (b. 1949), *Storm Cellar*, 1980, ink on paper, 15 x 11 in., available through the artist ■ **KYLEE SNOW** (b. 1988), *What Lies Here Is Steadfast*, 2022, graphite on gessoed panel, 9 x 12 in., private collection ■ **MEGAN SCHAUGAARD** (b. 1983), *Continuing Constellations*, 2022, graphite and charcoal on paper, 8 x 10 in., available through the artist



(CLOCKWISE FROM TOP LEFT) **AARON WESTERBERG** (b. 1974), *Anna with Smirk*, 2004, charcoal on rice paper, 14 x 7 in., Vanessa Rothe Fine Art (Laguna Beach, California) ■ **SUSAN LYNN** (b. 1963), *Puppy Nap*, 2016, water-soluble pencil on paper, 5 x 8 in., private collection ■ **DANIEL VOLENEC** (b. 1955), *Tomorrow*, 2022, charcoal and pencil on paper, 21 x 29 in., available through the artist ■ **CHELSIE MURFEE** (b. 1984), *Are You Listening?*, 2021, graphite and ink (mixed media) on paper, 27 x 39 in., 33 Contemporary Gallery (Chicago) ■ **DAGGI WALLACE** (b. 1962), *We All Bleed Red (Bart)*, 2022, pan pastel, soft pastel, charcoal on stone paper, and acrylic ink on wood panel, 8 x 8 in., available through the artist